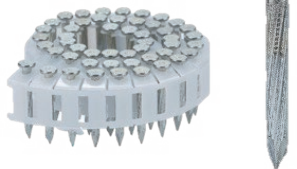
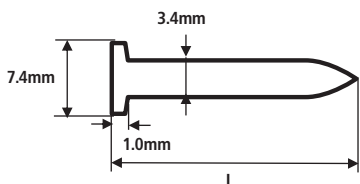




### Production data

#### Dimensions



Item name	L
CAP27W4-H	27
CAP32W4-H	32
CAP38W4-H	38
CAP45W4-H	45
CAP50W4-H	50
CAP65W4-H	65

#### General Information

Material: Carbon Steel  
 Hardness > HRC55  
 Zinc coating > 5µm

#### Tool

**PowerLite** HN120



### Applications

#### Plywood to Thin Steel



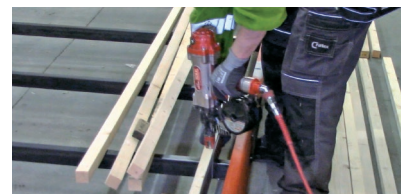
Plywood to Metal Stud

#### Board to Thin Steel



Gypsum board to Metal Stud

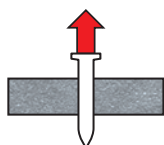
#### Wood to Thin Steel



Wood to Metal Stud

### Test Data

#### Pull Out Test

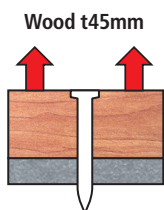


Steel t4.5mm

#### Maximum Load (kN)

	CAP38W4-H	Failure mode
1	4.98	Pull through
2	6.23	
3	5.89	
4	6.90	
5	5.71	
Ave.	5.94	

#### Pull Through Test



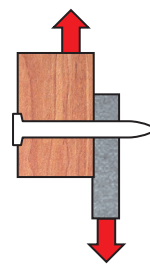
Steel t4.5mm

#### Maximum Load (kN)

	CAP65W4-H	Failure mode
1	3.37	Pull through
2	3.14	
3	3.84	
4	2.35	
5	2.43	
6	3.55	
7	2.79	
8	3.41	
9	3.18	
10	2.69	
Ave.	3.08	

#### Shear Test

Wood t45mm



Steel t4.5mm

#### Maximum Load (kN)

	CAP65W4-H	Failure mode
1	3.41	Failure of the wood
2	3.57	
3	3.65	
4	4.94	
5	3.80	
6	3.74	
7	4.04	
8	3.71	
9	3.73	
10	3.55	
Ave.	3.81	

## Application requirements

**Thickness of Steel < 4.5mm**

## Nail Selector

Top member	Item name
12mm Plywood	CAP27W4-H, CAP32W4-H
18-25mm Wood	CAP38W4-H
12-25mm Board	CAP38W4-H
25mm Wood	CAP45W4-H
25-38mm Wood	CAP50W4-H
25-38mm Board	CAP50W4-H
38-50mm Wood	CAP65W4-H
38-50mm Board	CAP65W4-H